

# Appia Announces New Rare Earth Discoveries, Increased Landholdings and Additional Drilling for Rare Earth Elements and Gallium at Alces Lake

written by Raj Shah | August 17, 2021

August 17, 2021 ([Source](#)) – **Appia Energy Corp. (CSE:API) (OTCQB:APAAF) (FSE: A0I.F) (FSE: A0I.MU) (FSE: A0I.BE)** (the “Company” or “Appia”) is pleased to announce preliminary exploration results and provide an update regarding the Company’s comprehensive drilling program to expand and confirm the extent of the estimated high grade mineralization of rare earth elements (“REE”) and gallium on the 100%-owned Alces Lake project, Athabasca Basin area, northern Saskatchewan.

## **ALCES LAKE HIGH-GRADE REE PROJECT**

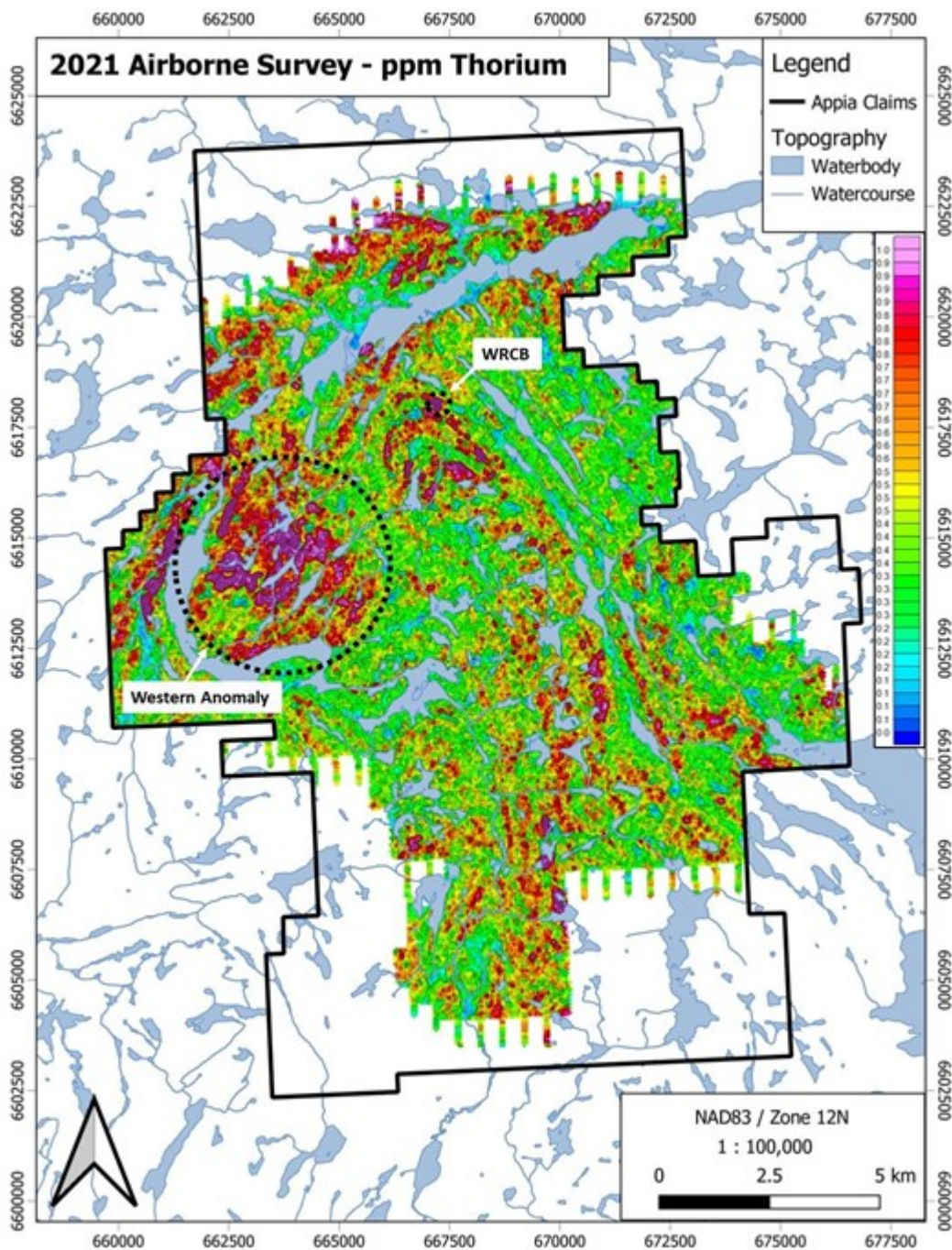
As announced on July 15, 2021, Appia has begun diamond drilling at Alces Lake with two diamond drill rigs. Field exploration is also continuing, with a team of 13 geologists onsite. The airborne geophysical survey over the entire property has been completed. Notable results include:

- **Completion of an airborne radiometric/magnetic survey over the property has highlighted numerous extensive thorium anomalies, most notably in the previously under-explored western portion of the claim block (Figure 1). There are now several newly-discovered monazite occurrences (Figure 2);**

- Acquisition by staking of 7,049.4 hectares (17,419.4 acres) of land contiguous to the existing claim block at Alces Lake, increasing 100% owned landholdings to 25,083.8 hectares (61,983.4 acres);
- Commencement of diamond drilling, with two drills currently active on the property. One drill is dedicated to the WRCB zones, while the other moves across the claims block, testing an ever-growing list of previously undrilled and newly-discovered targets; and
- Planned diamond drilling has been increased from approximately 5,700m to 7,200m or more as a result of successful exploration activities.

### **Airborne Geophysics**

An airborne radiometric and magnetic survey was flown in June and July at 50m line spacing. The survey has identified numerous thorium anomalies including a large thorium anomaly in the western portion of the property (Figure 1, the “Western Anomaly”) which has resulted in the discovery of several monazite-rich outcrop occurrences (thorium is associated with monazite which hosts rare-earth elements at Alces Lake). There are numerous anomalies remaining to be explored in this new area.



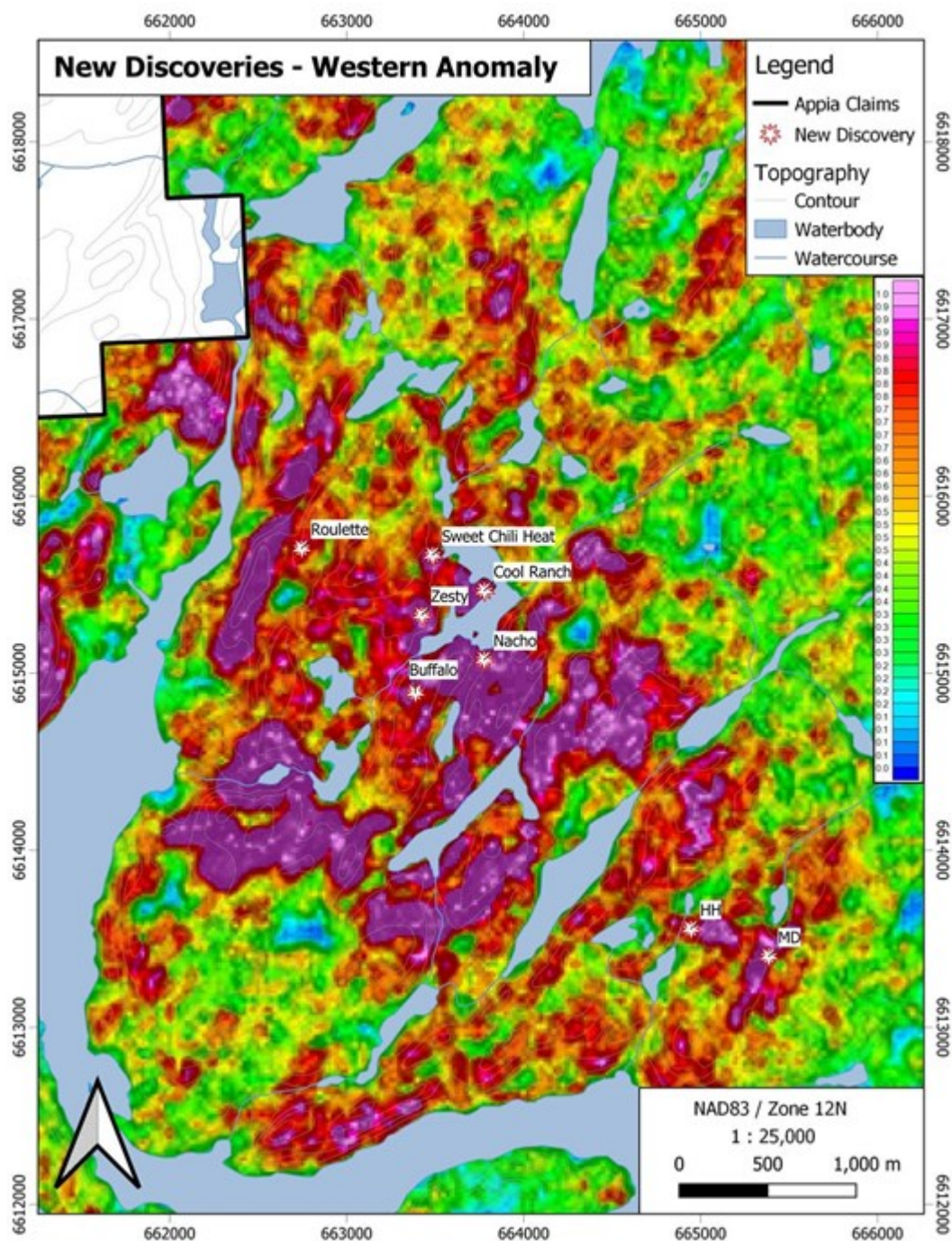
**Figure 1** – Airborne survey showing thorium anomalies and location of the Western Anomaly within the core of a large regional fold.

To view an enhanced version of this graphic, please visit:

[https://orders.newsfilecorp.com/files/5416/93373\\_e8ab2e3aa4043871\\_005full.jpg](https://orders.newsfilecorp.com/files/5416/93373_e8ab2e3aa4043871_005full.jpg)

Most notably, the Sweet Chili Heat zone ("SCH"), among others (Figure 2), is a new discovery that was found as a direct result of the new airborne survey. The SCH is hosted in a biotite-rich shear zone and contains both "augenetic pods" of semi-massive monazite (Figure 3) and coarse grained disseminated monazite (Figure 4). Monazite mineralization has an exposed strike length of ~25m, with elevated radiation readings continuing under ground cover for an additional ~30m. Drilling has been planned and prioritized in the current program for this exciting discovery.





**Figure 2** – Airborne survey results showing highly elevated thorium levels on the Western Anomaly and location of new monazite discoveries.

To view an enhanced version of this graphic, please visit:

[https://orders.newsfilecorp.com/files/5416/93373\\_e8ab2e3aa4043871\\_006full.jpg](https://orders.newsfilecorp.com/files/5416/93373_e8ab2e3aa4043871_006full.jpg)





**Figure 3** – *Biotite-rich shear zone at SCH with “augenitic pods” of semi-massive monazite.*

To view an enhanced version of this graphic, please visit:

[https://orders.newsfilecorp.com/files/5416/93373\\_e8ab2e3aa4043871\\_007full.jpg](https://orders.newsfilecorp.com/files/5416/93373_e8ab2e3aa4043871_007full.jpg)



**Figure 4** – *Biotite-rich shear zone at SCH with coarse-grained monazite (different location than Figure 3).*

To view an enhanced version of this graphic, please visit:

[https://orders.newsfilecorp.com/files/5416/93373\\_e8ab2e3aa4043871\\_008full.jpg](https://orders.newsfilecorp.com/files/5416/93373_e8ab2e3aa4043871_008full.jpg)

Nicolas Guest, Alces Lake Project Manager noted that “The new airborne survey correlates nicely with known REE mineralization and has led directly to the discovery of several new monazite occurrences. We are excited about this sizeable thorium anomaly within the core of a prominent regional fold structure. This greatly expands the potential at Alces Lake and the Western Anomaly area is now as compelling a prospect as our existing discovery at WRCB. We still have much of the survey area left to explore and with a new all-season camp, we are well-positioned to extend the drilling season into the colder months.”

### **Diamond Drilling**

Approximately 7,200 metres of drilling has been planned to test the near-surface and down-plunge extents of new and existing rare-earth targets, up from the previous plan of 5,700+ metres and total drilling could exceed 10,000 metres. More than 4,000 metres will be dedicated to identifying the depth potential of the WRCB zones (cumulatively the Wilson-Richard-Charles-Bell and Ivan-Dylan-Dante zones) and help complete the understanding of this significant discovery. Drilling results are expected to be released as received and analysed by the company.

The Company is fully-funded for the expanded 2021 program and all required permits for the exploration activities are in-hand.

With the largest exploration and diamond drilling program in the Company’s history now underway, exploration results will be released as received and analyzed by the company. Analysis of the summer exploration and drilling program will follow and may lead to the preparation of an NI 43-101 (Technical Report with 3D Geophysical-geological Models & Preliminary Economic

Assessment) report expected near the end of 2021. The Alces Lake project encompasses some of the highest-grade total and critical\* REEs and gallium mineralization in the world, hosted within a number of surface and near surface monazite occurrences that remain open at depth and along strike.

The Alces Lake project is in northern Saskatchewan, the same provincial jurisdiction that is developing a “first-of-its-kind” rare earth processing facility in Canada, currently under construction by the Saskatchewan Research Council and is scheduled to become operational in late 2022.

To ensure safe work conditions are met for the workforce, the Company has developed exploration guidelines that comply with the Saskatchewan Public Health Orders and the Public Health Order Respecting the Northern Saskatchewan Administration District in order to maintain social distancing and help prevent the transmission of COVID-19.

\* Critical rare earth elements are defined here as those that are in short-supply and high-demand for use in permanent magnets and modern electronic applications such as electric vehicles and wind turbines (i.e: neodymium (Nd), praseodymium (Pr), dysprosium (Dy) and terbium (Tb)).

The technical content in this news release was reviewed and approved by Dr. Irvine R. Annesley, P.Geo, Advisor to Appia’s Board of Directors, and a Qualified Person as defined by National Instrument 43-101.

## **About Appia**

Appia is a Canadian publicly-listed company in the uranium and rare earth element sectors. The Company is currently focusing on delineating high-grade critical rare earth elements, gallium and uranium on the Alces Lake property, as well as exploring for



high-grade uranium in the prolific Athabasca Basin on its Loranger, North Wollaston, and Eastside properties. The Company holds the surface rights to exploration for 72,651 hectares (179,525 acres) in Saskatchewan. The Company also has a 100% interest in 12,545 hectares (31,000 acres), with rare earth element and uranium deposits over five mineralized zones in the Elliot Lake Camp, Ontario.

Appia has 107.6 million common shares outstanding, 128.1 million shares fully diluted.

For more information, visit the Appia's website at [www.appiaenergy.ca](http://www.appiaenergy.ca).

*Cautionary Note Regarding Forward-Looking Statements: This News Release contains forward-looking statements which are typically preceded by, followed by or including the words "believes", "expects", "anticipates", "estimates", "intends", "plans" or similar expressions. Forward-looking statements are not guarantees of future performance as they involve risks, uncertainties and assumptions. We do not intend and do not assume any obligation to update these forward- looking statements and shareholders are cautioned not to put undue reliance on such statements.*

*Neither the Canadian Securities Exchange nor its Market Regulator (as that term is defined in the policies of the CSE) accepts responsibility for the adequacy or accuracy of this release.*

For further information, please contact:

**Tom Drivas**, CEO and Director: (cell) 416-876-3957, (fax) 416-218-9772 or (email) [appia@appiaenergy.ca](mailto:appia@appiaenergy.ca)

**Frederick Kozak**, President: (cell) 403-606-3165 or

(email) [fkozak@appiaenergy.ca](mailto:fkozak@appiaenergy.ca)

**Frank van de Water**, Chief Financial Officer and Director, (tel)  
416-546-2707, (fax) 416-218-9772 or  
(email) [fvandewater@rogers.com](mailto:fvandewater@rogers.com)