

# Leocor Gold Completes Phase 1 Soil Campaign at Startrek Project, Gander Area of North East Newfoundland, Canada

written by Raj Shah | December 8, 2021

December 8, 2021 ([Source](#)) – Leocor Gold Inc. (the “Company” or “Leocor”) (CSE:LECR) (CNSX:LECR.CN) (OTC:LECRF) (FRA:LGO) is pleased to announce the completion of a soil sampling campaign, consisting of 2894 soils, on the Startrek Property, located near Gander, Newfoundland, Canada.

This campaign forms part of a comprehensive phase one exploration program on the project which is a grassroots-stage property totaling 6,847 hectares, located 20 km east of the town of Gander in north central Newfoundland. (Leocor is earning up to 70% of the Startrek Property). The property has been historically prospected for gold and more recently, since 2014, it has been explored for its base metal – antimony (Sb) – potential.

The Project contains three areas of interest, the Western, Central and Eastern Zones. More than 50 gold occurrences have been discovered on the property through previous trenching and grab samples.

- The Western Zone features gold mineralization over a strike length of 2km, with grab samples\*\* up to 3.5 grams-per-tonne (“g/t”) gold (“Au”) and averaging 437 ppb Au, in quartz stock work, with veins featuring epithermal features, arsenopyrite and some stibnite.
- The Eastern Zone has been traced for 2km and displays

characteristics of hydrothermal alteration, with solidification, albite, and tourmaline. Assays range from 12 ppb to 3.5 ppb Au and average 96 ppb Au.

- The Central Zone has seen trenching by Rubicon Minerals, which focused on gold showings in epithermal veining, and which produced highly anomalous values of gold, arsenic and antimony, and sampling by White Metal which produced grab samples\*\* up to 41 g/t Au. The average of grabs and channels in the zone is 300 ppb Au.

Leocor is working with GroundTruth Exploration on the program which will unify the licences with a common soil database and holistically define what we expect to be a significant mineralized footprint. The GroundTruth method breaks down the exploration process into phases, typically defined as follows:

#### Phase 1)

- Soils 100 m line separation and 25 m sampling separation
- Aeromagnetic and VLF survey
- Lidar Survey
- Ground Magnetic survey

#### Phase 2)

- GT Probe Drilling (around areas of interest constituting potential targets)
- Induced Polarization across potential drill targets

#### Phase 3)

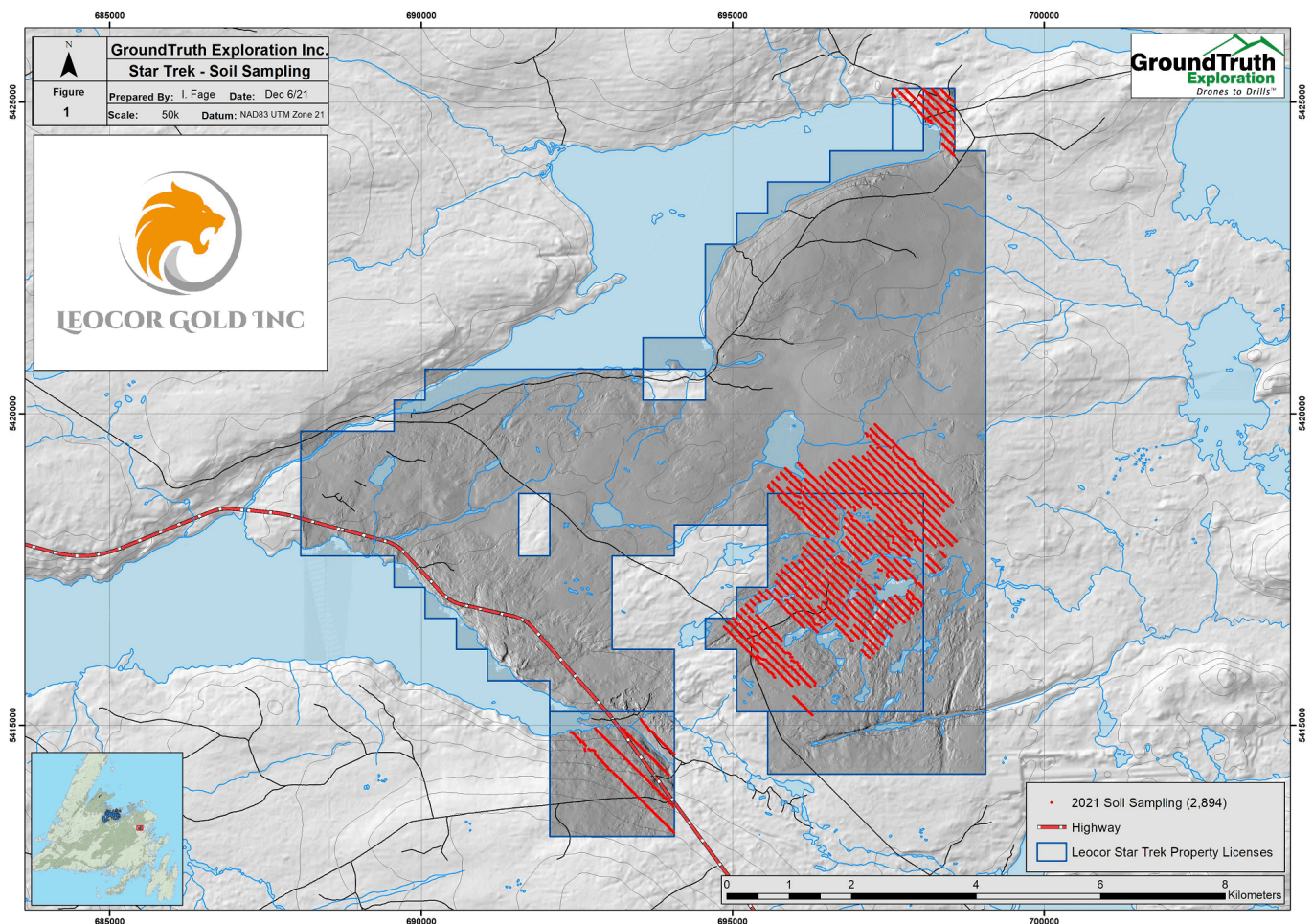
- GT Rab Drilling (typically 60m holes in fences across shallow targets)

#### Phase 4)

- Diamond or Reverse Circulation drilling (once structure and orientation of target are well defined)

The overall distribution of soils is illustrated in Figure 1. In the north of the property area, a series of NW trending lines cover license 027531M and part of the adjacent 026779M license. These samples cover immediate work requirements for 026779M and are designed to look for mineralization associated with several Au bearing float samples, the best of which is sample 18027 where smoky quartz and sulphide are reported with 1106 ppb Au. The soil lines here are oriented NW across the general structural fabric of the district.

In the south end of the property a further series of NW trending lines cover license 027282M. These samples more than cover the small work requirement on that property look to define mineralization around sample 235662 which reported 558 ppb Au in epithermal float.



[Click Image To View Full Size](#)

## Figure 1: Soil lines for the Startrek project, Gander, Newfoundland, Canada

“We’re following a methodical, systematic approach to our exploration efforts,” said CEO, Alex Klenman. “This plan is by far the most efficient and cost effective way to identify zones of interest and to generate priority drill targets within those zones. Our goal is meaningful discovery, and we’re confident our efforts will bear fruit. We’re looking forward to 2022 and the continued positive development of our projects in Newfoundland,” continued Mr. Klenman.

### **About Leocor’s Startrek Project**

The history of the project is traced back to when it was first staked by Noranda in 1988 on the basis of multi-element lake sediment anomalies. They conducted reconnaissance soil survey 778 B-Horizon soils. Prospecting indicated several zones of altered rock with elevated gold in the range of 130 to 270 ppb and with one value of 1g/t Au. Found quartz breccias. Suspected base metal potential as well as gold potential.

Between 1995-1996 Terra Nova Exploration staked ground including Noranda’s original Tower Property. They conducted prospecting and rock sampling programme (26 samples) which detected a loosely-defined 30m zone of quartz vein ridge outcrops and quartz vein float with stibnite-arsenopyrite-pyrite mineralization. Massive to semi-massive stibnite mineralization in outcrop returned >440 ppm Sb and 71 to 270 ppb Au. Float samples returned 2.19% to 7.30% Sb and 5 ppb to 671 ppb Au.

In 1996 NDT Ventures conducted prospecting which included 39 rock chip samples from which anomalous values of gold in two hand trenches reported values to up to 498 ppb Au, and generally greater than 2200ppm As. They also took 20 heavy mineral concentrate samples, one of which reported a value of 134 ppb Au

while four samples contained anomalous As (1400 to 3100 ppm).

In 2001 Alexander S. Duffitt prospected in the area, finding “slightly anomalous Au numbers”.

Between 2003 and 2004 Rubicon Minerals carried out prospecting, mapping, compilation work and trenching, “The highest gold values obtained were 8.957 g/t over 0.4 meters and 3.037 g/t over 0.5 meters.” In 2004 they drilled the property, but results were disappointing “best gold mineralization was intersected in quartz veining along the Start Track Trend where hole ST-04-01 returned two assays of > 1.0 g/t Au including 1.34 g/t over 0.6 m and 1.25 g/t over 0.65 m.

In 2014 Wayne Reid reported that “trench 5 uncovered a 5.0 meter wide stibnite zone and a number of plus meter diameter boulders were traced up to 50 meters from the in situ mineralization. The target was a Sb soil anomaly that is at least 500 meters in strike. Values from the sampling include 0.64% Sb and 186 ppb Au over 5.0 meters (channel samples) from a quartz breccia zone. The trenching also exposed a number of large boulders of higher grade antimony with values of up to 3.93% Sb.” The Stares saw the property as a base metal opportunity for the Beaver Brook Antimony mine and mill which sits idle.

In November 2014 “Sokoman completed reconnaissance soil geochemical and ground magnetometer surveys over the Trench 1 area, an antimony discovery made by Mike and Robert Stares in 2013. The program consisted of the collection of 110 B-horizon soils. The soil geochemical results returned multiple strongly anomalous antimony (Sb) values ranging to a maximum of 4500 ppm Sb, commonly with elevated to anomalous gold values up to 181 ppb Au.

The data reported here is historic in nature and has not yet been verified by a Qualified Person. Leacor has relied on the

information supplied in the assessment reports of the companies listed above and from information found in MODS (Mineral Occurrence Data System) published by the Newfoundland Department of Natural Resources.

**\*\* The surface grab samples described in this news release are selective by nature and are unlikely to represent average grades of the Project**

### **National Instrument 43-101 Disclosure**

Dr. Paul David Robinson, P.Geo, is a qualified person as defined by National Instrument 43-101. Dr. Robinson supervised the preparation of the technical information in this news release.

### **About Leocor Gold Inc.**

Leocor Gold Inc. is a British Columbia-based resource company involved in the acquisition and exploration of precious metal projects, with a current focus in Atlantic Canada. Leocor, through outright ownership and earn-in agreements, currently controls several gold-copper projects in prime exploration ground located within the prolific Baie Verte Mining District. Leocor's Baie Verte portfolio includes the Dorset, Dorset Extension, Copper Creek and Five Mile Brook projects, creating a contiguous nearly 2,000 hectare exploration corridor. The Company also controls the 6,847-ha grassroots Startrek project near Gander, as well as three district scale land packages in North Central Newfoundland, known as Robert's Arm, Hodge's Hill, and Leamington, (collectively "Western Exploits") representing over 144,000 hectares (1,440 square kilometers) of prospective exploration

### **Contact Information**

Leocor Gold Inc.

Alex Klenman, Chief Executive Officer

Email: [aklenman@leocorgold.com](mailto:aklenman@leocorgold.com)

Telephone: (604) 970-4330

Neither the Canadian Securities Exchange nor its Regulation Services Provider (as that term is defined in the policies of the Canadian Securities Exchange) accepts responsibility for the adequacy or accuracy of this release.

### **Cautionary Statements Regarding Forward-Looking Information**

This press release contains forward-looking information within the meaning of Canadian securities laws. Such information includes, without limitation, information regarding the terms and conditions of the Option. Although Leocor believes that such information is reasonable, it can give no assurance that such expectations will prove to be correct.

Forward looking information is typically identified by words such as: “believe”, “expect”, “anticipate”, “intend”, “estimate”, “postulate” and similar expressions, or are those, which, by their nature, refer to future events. Leocor cautions investors that any forward-looking information provided by Leocor is not a guarantee of future results or performance, and that actual results may differ materially from those in forward looking information as a result of various factors, including, but not limited to: the agreement of the parties to proceed with the proposed transaction on the terms set out in the Option Agreements or at all; Leocor’s ability to exercise the Options; the state of the financial markets for Leocor’s securities; the state of the natural resources sector in the event the Option, or any of them, are completed; recent market volatility; circumstances related to COVID-19; Leocor’s ability to raise the necessary capital or to be fully able to implement its business

strategies; and other risks and factors that Leocor is unaware of at this time. The reader is referred to Leocor's initial public offering prospectus for a more complete discussion of applicable risk factors and their potential effects, copies of which may be accessed through Leocor's issuer page on SEDAR at [www.sedar.com](http://www.sedar.com).

The forward-looking statements contained in this press release are made as of the date of this press release. Leocor disclaims any intention or obligation to update or revise any forward-looking statements, whether as a result of new information, future events or otherwise, except as required by law.