

Pancon Expands Its 100%-Owned Jefferson Gold Project to Surround the Former Brewer Gold Mine Property in South Carolina

written by Raj Shah | July 15, 2019



July 15, 2019 ([Source](#))
– Pancontinental Resources Corporation (TSXV: PUC) (“Pancon Resources,” “Pancon” or the “Company”) is pleased to announce it has strategically improved its 100%-owned Jefferson Gold Project’s land

position on the gold-rich Carolina Slate Belt in South Carolina, USA (see *Figures 1 and 2*). The Project has grown to 644 hectares (1,591 acres) and now surrounds the former Brewer Gold Mine property (see *Figure 3*).

The Jefferson Gold Project is located on the same mineralized trend and 15 kilometres northeast of the operating Haile Gold Mine, which produced 131,819 ounces of gold in 2018 and has measured and indicated gold resources of 3.1 million ounces. The Jefferson Project is located 55 kilometres along trend northeast of the former Ridgeway Gold Mine, where Kennecott Minerals produced more than 1.6 million ounces of gold from 1988-1999.

“Pancon acquired the Jefferson Gold Project, on the highly mineralized, prospective and underexplored Carolina Slate Belt, in mid-2016. In light of today’s strengthening gold market (see *Figure 4*), we have repositioned the Jefferson Project to take

full advantage of market dynamics with our improved land package,” said Layton Croft, Pancon President and CEO. “Our Project now surrounds the former Brewer Gold Mine, which produced 178,000 ounces of gold several decades ago from open pit operations that mined only down to 100-metre depths.”

Brewer’s prospective geology, including diatreme breccias, associated high sulphidation alteration, gold and copper mineralization, and geophysics support a possible porphyry-style copper-gold system at depth (Schmidt, R.G., 1978, *The Potential for Porphyry Copper-Molybdenum Deposits in the Eastern United States*, US Geological Survey).

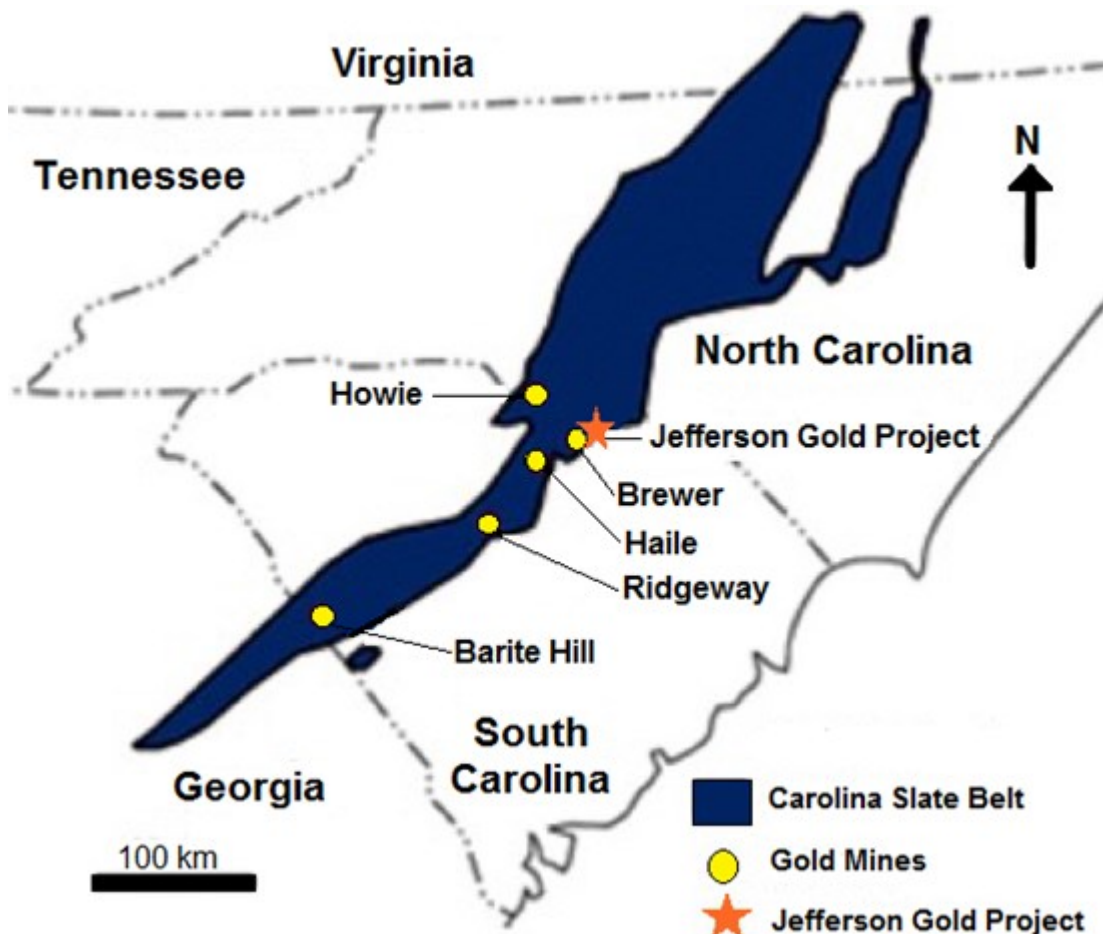


Figure 1: The Carolina Slate Belt runs from Georgia northwest through the Carolinas to Virginia, and has hosted many gold mines, including Barite Hill, Ridgeway, Howie, Haile and Brewer.

The Jefferson Gold Project surrounds Brewer and is 15 km along trend from Haile. (Source: US Geological Survey and Hatcher and Butler).

To view an enhanced version of Figure 1, please visit:

https://orders.newsfilecorp.com/files/5156/46270_ae6282ca046ee9e2_003full.jpg

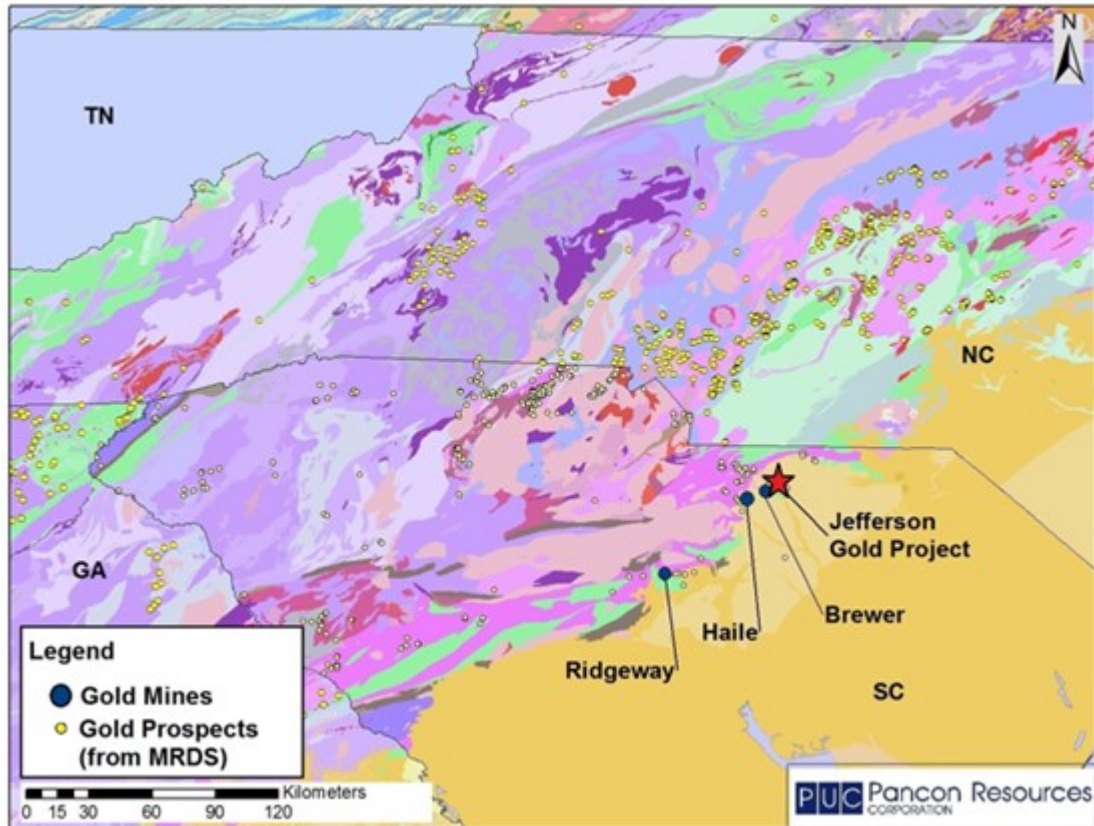


Figure 2: Gold prospects and gold mines on the Carolina Slate Belt. (Source: US Geological Survey.)

To view an enhanced version of Figure 2, please visit:

https://orders.newsfilecorp.com/files/5156/46270_ae6282ca046ee9e2_004full.jpg

Pancon's near-term plans for the Jefferson Gold Project include further expanding the land position, conducting geophysics, and preparing for a drill program on targets believed to correlate to the Brewer gold system and with geological similarities to

the Haile Gold Mine, including similar host rock lithology, similar age, similar stratigraphy and time of mineralization, as well as similar alteration style and mineral assemblage (Ayuso, R.A., Wooden, J.L., Foley, N.K., Seal, R.R.II, Sinha, A.K., 2005, *U-Pb zircon ages and Pb isotopic geochemistry of gold deposits in the Carolina Slate Belt of South Carolina*; and Foley, N.K. and Ayuso, R.A., 2012, *Gold deposits of the Carolina Slate Belt, southeastern United States: age and origin of the major producers*). Of the 10 holes drilled on the Jefferson Gold Project between 2011-17, nine of them intersected gold mineralization, including one averaging 1.27 grams per tonne over 164.3 metres, true width unknown. *Pancon cautions that the mineralization on adjacent and nearby properties is not necessarily indicative of the mineralization that may be identified on the Company's property.*

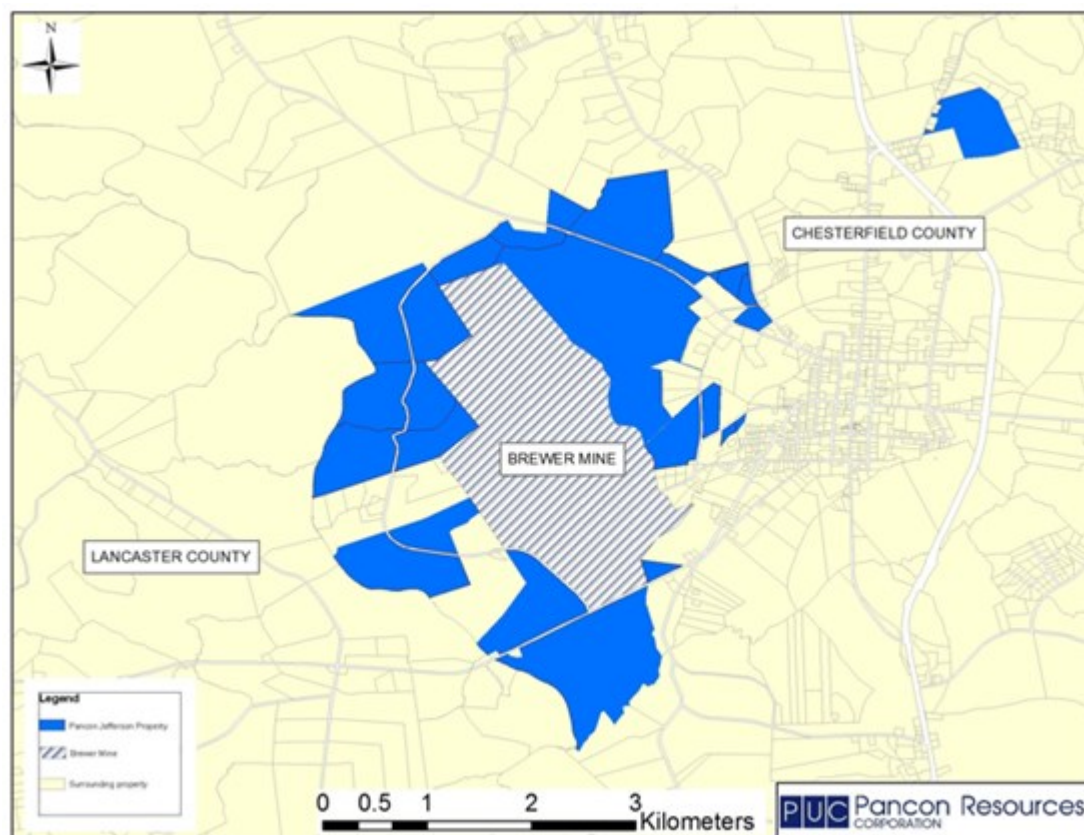


Figure 3: The expanded Jefferson Gold Project surrounds the former Brewer Gold Mine property.

To view an enhanced version of Figure 3, please visit:

https://orders.newsfilecorp.com/files/5156/46270_ae6282ca046ee9e2_005full.jpg

The chart below (*Figure 4*) shows gold prices since 2001 and how recent upward price movements have broken through previous resistance levels.



Figure 4: Gold spot prices based on the GOLDS Commodity Index. (Source: Bloomberg, 5 July 2019.)

To view an enhanced version of Figure 4, please visit:

https://orders.newsfilecorp.com/files/5156/46270_ae6282ca046ee9e2_006full.jpg

Qualified Person:

The technical information in this news release has been prepared in accordance with Canadian regulatory requirements as set out in NI 43-101 and reviewed and approved by Richard “Criss” Capps, PhD, RPG, SME REG. GEO, a Qualified Person as defined by NI 43-101.

About Pancon Resources:

Pancontinental Resources Corporation (TSXV: PUC), or Pancon, is a Canadian junior mining company focused on North American gold and battery metals projects in proven mining districts and near or surrounding producing or former mines. Pancon's 100%-owned Jefferson Gold Project is 15 km along-trend from the Haile Gold Mine and surrounds the former Brewer Gold Mine property, on the prolific and underexplored Carolina Slate Belt in South Carolina, USA. In addition, Pancon has 5 nickel-copper-cobalt projects in Northern Ontario. The Montcalm, Gambler, Nova and Strachan Projects are near and surround the former Montcalm Ni-Cu-Co Mine property, located 65 km northwest of Timmins. The St. Laurent Project has an advanced Ni-Cu-Co-Au-Pt-Pd target and is located 50 km south of Detour Lake Mine and 20 km southwest of Casa Berardi Mine.

Neither TSX Venture Exchange nor its Regulation Services Provider (as that term is defined in the policies of the TSX Venture Exchange) accepts responsibility for the adequacy or accuracy of this release.

This news release contains forward-looking information which is not comprised of historical facts. Forward-looking information is characterized by words such as "plan", "expect", "project", "intend", "believe", "anticipate", "estimate" and other similar words, or statements that certain events or conditions "may" or "will" occur. Forward-looking information involves risks, uncertainties and other factors that could cause actual events, results, and opportunities to differ materially from those expressed or implied by such forward-looking information. Factors that could cause actual results to differ materially from such forward-looking information include, but are not limited to, changes in the state of equity and debt markets, fluctuations in commodity prices, delays in obtaining required regulatory or governmental approvals, and other risks involved in the mineral exploration and development industry, including

those risks set out in the Company's management's discussion and analysis as filed under the Company's profile at www.sedar.com. Forward-looking information in this news release is based on the opinions and assumptions of management considered reasonable as of the date hereof, including that all necessary governmental and regulatory approvals will be received as and when expected. Although the Company believes that the assumptions and factors used in preparing the forward-looking information in this news release are reasonable, undue reliance should not be placed on such information. The Company disclaims any intention or obligation to update or revise any forward-looking information, other than as required by applicable securities laws.