

# Project 81 Exploration Update – Crawford Nickel – Cobalt Project Encouraging Preliminary Results from Mineralogical Studies

written by Raj Shah | June 11, 2019



**TSXV: NOB**

June 11, 2019 ([Source](#)) – Noble Mineral Exploration Inc. (“Noble” or the “Company”) (TSX-V:NOB, FRANKFURT: NB7, OTC.PK:NLPXF) is pleased to announce that its Option and JV partner Spruce Ridge Resources Ltd (TSX-V SHL) has released the results

of mineralogical studies on drill core samples from the Company’s Crawford Nickel-Cobalt project near Timmins, Ontario (see Figure 1).

The recent 1,818-metre, 4-hole drill program resulted in wide intersections of up to 558 m of serpentized dunite and peridotite with consistent concentrations of nickel, cobalt, palladium and platinum (see news release of March 4th, 2019). The purpose of the study was to determine whether the nickel (and other elements) occur in the sulphide state, which could be economically extracted from the ultra mafic host rocks.

Twelve samples of drill core were selected from 1.5-metre analyzed intervals, to cover a range of nickel, cobalt and palladium contents as well as differing degrees of serpentization and a range of sulphur contents. Polished thin sections were made from the core samples and were examined under

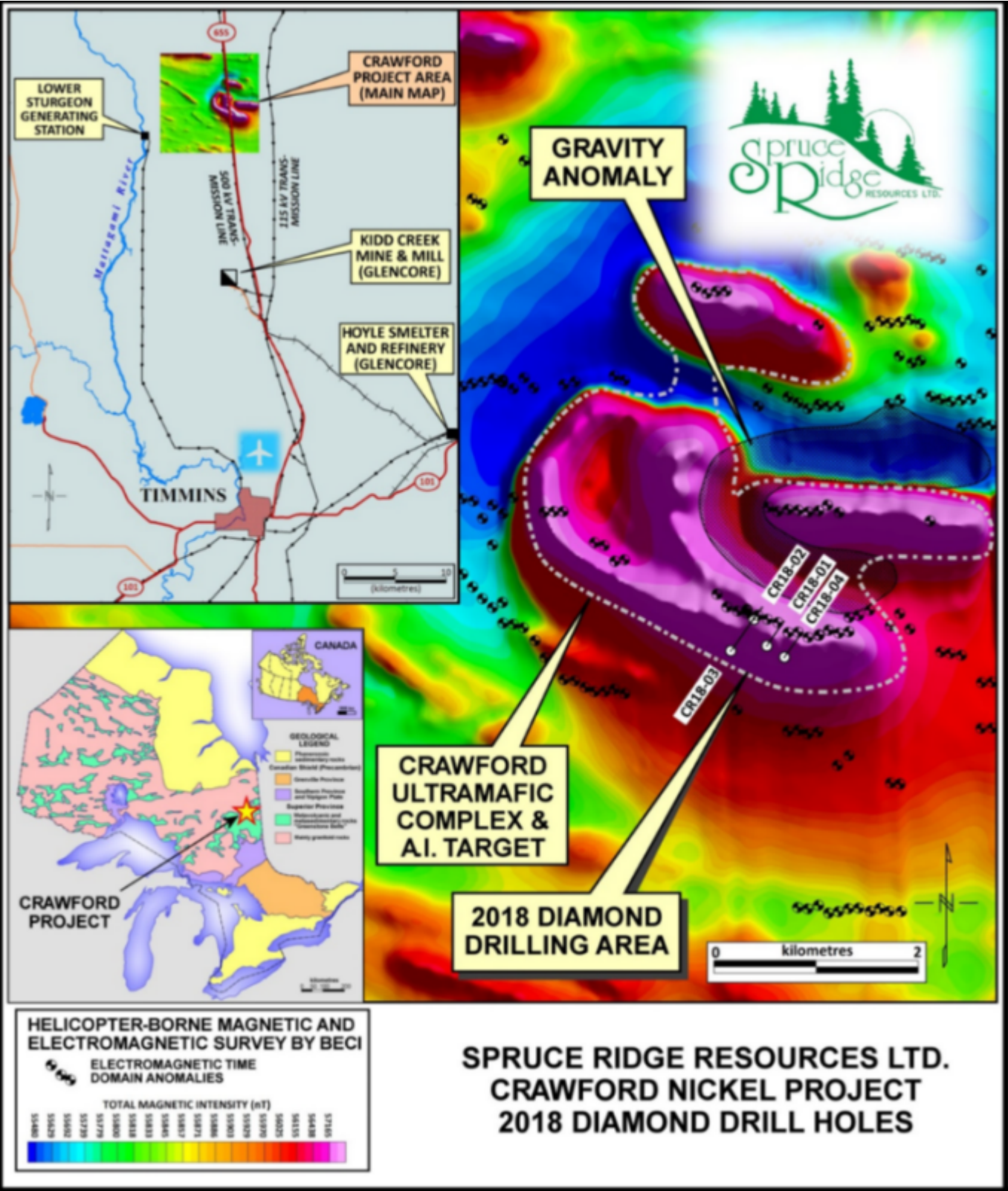
reflected-light microscope and a scanning electron microscope (SEM), which provided chemical analyses of individual mineral grains to aid in their identification.

The following minerals were identified as carrying most of the nickel and cobalt (in order of decreasing abundance): pentlandite (nickel-iron sulphide – 50%), heazlewoodite (nickel sulphide – 35%), awaruite (nickel-iron alloy – 15%) and minor godlevskite (nickel sulphide with minor iron). The pentlandite, which dominates the nickel-bearing mineral assemblage, is considered most promising for economic nickel extraction.

In addition to the mineralogical identification study, an analysis was performed on pulp samples of the 12 core intervals from which the mineralogy samples were taken. Table 1 shows a comparison between the Peroxide Fusion analysis and the Aqua Regia analysis for cobalt and nickel and establishes the potential percentages of ‘Liberation’ of these key elements.

DDH No.	From (m)	To (m)	Length (m)	Cobalt fusion (ppm)	Cobalt AR (ppm)	Percent Liberated	Ni % Fusion	Ni % AR-ICP	Percent Liberated	S % Fusion
CR18-01	165.0	166.5	1.5	240	193	80%	0.669	0.431	64%	0.28
CR18-01	238.5	240.0	1.5	120	105	88%	0.297	0.203	68%	0.02
CR18-01	243.0	244.5	1.5	170	149	88%	0.487	0.332	68%	0.15
CR18-01	286.5	288.0	1.5	150	130	87%	0.345	0.232	67%	0.18
CR18-01	423.0	424.5	1.5	120	85	71%	0.317	0.203	64%	0.03
CR18-01	588.0	589.5	1.5	110	87	79%	0.272	0.178	65%	0.01
CR18-03	508.5	510.0	1.5	140	108	77%	0.332	0.217	65%	0.01
CR18-03	535.5	537.0	1.5	140	109	78%	0.337	0.227	67%	0.07
CR18-03	594.0	595.5	1.5	150	110	73%	0.349	0.205	59%	0.05
CR18-04	165.0	166.5	1.5	120	52	43%	0.182	0.050	27%	< 0.01
CR18-04	216.0	217.5	1.5	260	206	79%	0.647	0.423	65%	0.60
CR18-04	337.5	339.0	1.5	130	103	79%	0.427	0.275	64%	0.20
				Mean Cobalt liberation		77%	Mean Nickel liberation		62%	

Table 1



[Click Image To View Full Size](#)

Figure 1

The 2018 drilling program by Spruce Ridge and its Joint Venture partner, a group of private investors, was focussed on the Noble Crawford Nickel-Cobalt project, a 3.5-kilometre long body of peridotite, dunite and their serpentized equivalents. The target was defined by a helicopter-borne magnetic and electromagnetic survey flown by Balch Exploration Consulting Inc. in 2017 and an airborne gravity survey flown by CGG in 2018, both conducted over the entire project area of 100 sq. km. An Artificial Intelligence (A.I.) review of data, provided by Albert Mining Inc. (TSX-V AIIM), also identified the area as being prospective for nickel.

The next phase of exploration for the Crawford project will include additional drilling to assess the dimensions of the mineralized zone, and additional metallurgical tests to determine how much of the nickel and associated metals are recoverable by standard methods.

Vance White, President and CEO of Noble said “we are very pleased with the results that Spruce has reported and in particular the core lengths containing consistent mineralization on this massive anomaly located within easy access from Highway 655, just north of Timmins, Ontario. The mineralogy results to date are very encouraging. We feel the Crawford Nickel-Cobalt project could contain significant tonnage and is close to existing infrastructure including the Kidd Creek milling complex. We look very much forward to Spruce advancing their exploration program as we continue to source additional Option and JV Partners for our extensive 79,000 ha holdings”.

Randy S C Singh P.Geo. (ON), P.Eng. (ON), VP Exploration & Project Development of Noble and a “qualified person” as such term is defined by National Instrument 43-101, has verified the data disclosed in this news release, and has otherwise reviewed and approved the technical information in this news release on

behalf of Noble Mineral Exploration Inc.

About Noble Mineral Exploration Inc.:

Noble Mineral Exploration Inc. is a Canadian-based junior exploration company which, in addition to its shareholdings in Spruce Ridge Resources Ltd. And MacDonald Mines Exploration Ltd. and its interest in the Holdsworth gold exploration property in the area of Wawa, Ontario, holds in excess of 79,000 hectares of mineral rights in the Timmins – Cochrane areas of Northern Ontario known as Project 81. Project 81 hosts multiple diversified drill-ready gold, nickel-cobalt and base metal exploration targets at various stages of exploration. More detailed information is available on the website at [www.noblemineralexploration.com](http://www.noblemineralexploration.com). Noble's common shares trade on the TSX Venture Exchange under the symbol "NOB".

Cautionary Statement:

Neither TSX Venture Exchange nor its Regulation Services Provider (as that term is defined in the policies of the TSX Venture Exchange) accepts responsibility for the adequacy or accuracy of this release. No stock exchange, securities commission or other regulatory authority has approved or disapproved the information contained herein.

The foregoing information may contain forward-looking statements relating to the future performance of Noble Mineral Exploration Inc. Forward-looking statements, specifically those concerning future performance, are subject to certain risks and uncertainties, and actual results may differ materially from the Company's plans and expectations. These plans, expectations, risks and uncertainties are detailed herein and from time to time in the filings made by the Company with the TSX Venture Exchange and securities regulators. Noble Mineral Exploration Inc. does not assume any obligation to update or revise its

forward-looking statements, whether as a result of new information, future events or otherwise.