

# Rockland Resources Provides Beryllium-Bearing Samples to Miresso Fusion Energy Research Company

written by Raj Shah | August 26, 2025

August 26, 2025 ([Source](#)) – Rockland Resources Ltd. (the “Company” or “Rockland”) (**CSE: RKL**) (**OTCQB: BERLF**) (**FSE: GB2**) reports that beryl samples from their Meteor project in Juab County, Utah have been provided to MiRESSO Co. Ltd. (“MiRESSO”), a fusion energy research company located in Misawa-shi, Japan<sup>(1)</sup>. Meteor is one of three beryllium properties held by Rockland in the Spor Mountain region that also hosts the world’s largest beryllium mine operated by Materion Corporation (NYSE: MTRN).

Rockland President Will Rascan states, “The minerals bertrandite and beryl are the only economic sources for beryllium, and Rockland is the only company that is actively exploring and developing these two sources. As we advance our relationship with MiRESSO, we will seize this opportunity to advance our exploration for beryl at our Meteor project, and elsewhere in this uniquely beryllium-rich region of Utah.”

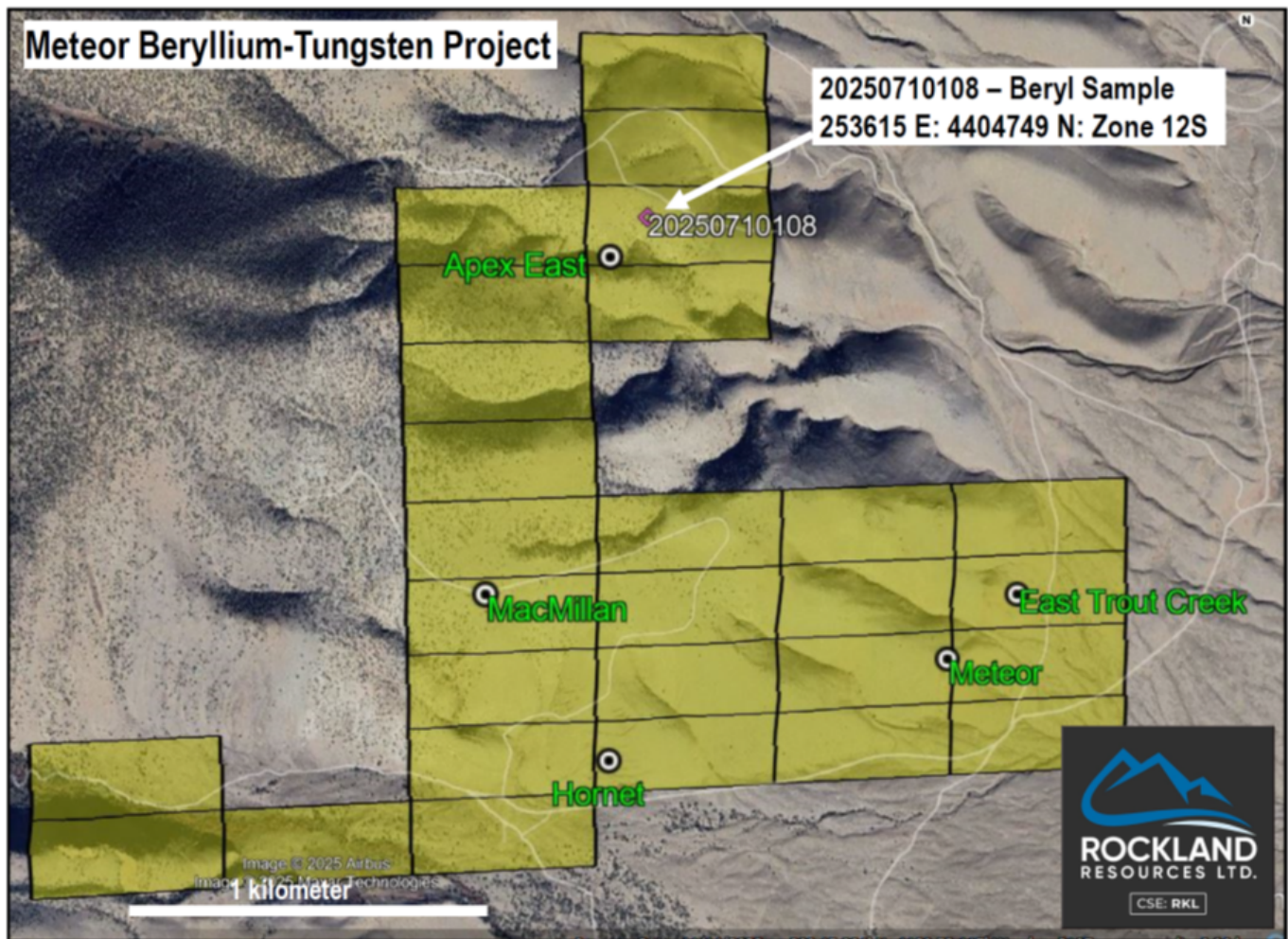
## Arrangement with MiRESSO Co. Ltd.

Through its Technical Advisor Mr. Chris Dorn, the Company has an arrangement with MiRESSO, who are engaged in the construction of an energy-efficient, cost-effective process for the extraction of beryllium from beryl. Beryllium is integral to the operation of molten salt nuclear energy systems, and more will be needed than is presently produced. MiRESSO anticipates a future

beryllium shortage and sees beryl as an essential source. While an advisor for Rockland, Mr. Dorn also serves as a Special Technical and Business Advisor to MiRESS0.

President Rascan further comments, “Beryllium is a critical element for meeting future clean nuclear energy needs. This reality was announced just last week with the agreement between Google, Kairos Power and the Tennessee Valley Authority to develop a molten salt nuclear power plant to drive their Google data centers, an announcement lauded by Materion.<sup>(2)</sup> “

**Meteor Project** – Located 70km west of the Materion mine along a well-maintained gravel road, Meteor includes historic mines and prospects focused on tungsten with beryl reported in zoned pegmatites.<sup>(3)</sup> Most of the world occurrences of beryl are in zoned pegmatites, with larger crystals near the center and smaller crystals at the margins. Beryl also associates with tungsten (as scheelite) in the pegmatites.<sup>(4)</sup> A map showing the sample location is provided below.



[Click Image To View Full Size](#)

**Sample Collection** – Zoned pegmatite weighing roughly 50kg was collected from the East Apex Mine area and hand-cobbed with potential beryl crystals removed on the basis of their physical characteristics. These features included a hardness of ~8 on the Mohs scale, a hexagonal crystal shape, and striation lines parallel to the crystal length that are typical of beryl. Note that many of these features are also shared with quartz, which is also a common mineral in the pegmatites and so it was not possible to ensure a pure beryl concentrate by physical features alone. Roughly 200 grams of the beryl-quartz mixture was concentrated from this method. From this mixture, a few grams of beryl crystals were concentrated by visual means.

**LIBS Analysis** – The beryl crystal concentrate and the beryl-quartz samples were both tested for the presence of beryllium using the Z-200 C LIBS hand-held analyzer that is marketed by SciAps (Andover, Massachusetts, USA). Laser-induced breakdown spectroscopy (“LIBS”) uses a laser in combination with aspirated argon gas to create a plasma that liberates light elements for detection including beryllium.<sup>(5)</sup> Presently there are no beryllium standards to calibrate the LIBS, and so the SciAps qualitative protocol ‘Element Pro’ was used to detect the presence of beryllium.<sup>(6)</sup> Element Pro distinguishes the signal amplitude for an element of interest against a background threshold. Both samples indicated the presence of beryllium. Both samples were sent to MiRESSO. Rockland continues to work with SciAps to develop a quantitative beryllium analytical protocol that includes creating its own in-house standards for calibration of the instrument.

Note that Meteor is an early-stage exploration project that has been visited only once by the Company, and insufficient data exist to assess the potential economics of beryl deposits on the property.

### **Additional Utah Beryllium Projects**

**Claybank** – Only five kilometres east of Materion’s beryllium mines at Spor Mountain and connected by a paved road leading to their processing facility, Claybank is the most strategically positioned of the Rockland properties. Mineralization at Claybank is constrained to an altered rhyolite tuff breccia erupted against a dolomite breccia and above a welded red rhyolite tuff. This geological relationship is believed to have constrained the hydrothermal fluids that generated bertrandite within the tuff unit. The property saw historical drilling in 1987 with 31 vertical drill holes distributed along strike of

the altered tuff (which is similar to the altered tuff being mined at Spor Mountain). Nineteen of the drillholes were closely-spaced and identified a zone of beryllium mineralization roughly 70 meters along strike of the tuff. Historical assays for the mineralization zone reported drillhole intercepts from ~2,500-6,500 ppm Be.<sup>(7)</sup> In 2014, twenty of 31 historic stockpiles taken from outcrop were analyzed by Materion using a lab-based beryllometer<sup>(4)</sup>, with results showing a range from 770-3,216 ppm Be and a weighted average of 1,741 ppm Be<sup>(8)</sup>. Most recently the Company conducted new sampling of all 31 stockpiles and of similar outcrops on the property (see *news release, August 6, 2025*). These samples were submitted for analysis and details of the sampling and results will be provided in the coming weeks.

**Beryllium Butte** – Beryllium Butte is in the Honeycomb Hills roughly 50km west of the Spor Mountain Mine along a well-maintained gravel road. Grab samples collected in 2022 returned highs of 4,810, 4,290, and 1,790 ppm Be from an altered rhyolite tuff breccia (see *news release, August 4, 2022*). Follow-up channel sampling along strike averaged 1,142 ppm Be over 25.5m, with a higher-grade portion returning 2,423 ppm Be over 6.13m (see *news release November 2, 2023*). For contrast, Spor Mountain ore is presently mined by the world's largest producer of beryllium (Materion Corp. – MTRN, NYSE) at an average grade of 2,460 ppm Be<sup>(9)</sup>. Beryllium Butte is permitted for drilling through the US Bureau of Reclamation with the intent to drill later this year.

### **Arrangement with Mithril Mining**

Rockland was fortunate to add Mr. Taylor Sulik as a Technical Advisor just after acquiring the Meteor tungsten-beryllium claims. Mr. Sulik is president of Mithril Mining Corporation, which is focused on the reshoring, extraction and processing of

US-based deposits of these critical minerals<sup>(10)</sup>. Through a partnership between Utah-based Hinkinite Resources, Mithril Mining has acquired a tungsten processing facility in Tooele County, Utah that processed 275 tons of tungsten concentrate as recently as 2017. The partnership intends to revamp and rehabilitate the facility as well as expand the scope of critical minerals able to be processed and become a hub-and-spoke processing center for the Great Basin of Utah and Nevada. The Tooele facility has power, water and permitting in place and is located only 40 kilometers north of the Meteor property. Rockland and Mithril are engaged in conversations that will provide expertise in processing techniques for beryllium and other critical mineral deposits in the Great Basin.

### **Promotional Activities**

Rockland further announces it has engaged with Aktiencheck.de AG and its principal, Stefan Lindam, pursuant to which Aktien will assist with an initial European marketing awareness program. The engagement includes up to five editorial write-ups, stand-alone e-mail marketing campaign distribution of the editorial write-ups to opt-in e-mail addresses of active investors, targeted distribution of the editorial reports to active investors, distribution of the editorial write-ups through social media to active financial investors and distribution of the editorial write-ups through the aktiencheck.de website and search engine marketing. The program commenced August 8, 2025, and will end after the 5<sup>th</sup> write-up is completed. The cost of the engagement is 25,000 euros. The principal of Aktiencheck.de AG is Mr. Lindam of Bahnhofstrasse 6 56470 Bad Marienberg Deutschland. Options or shares of the Company were not issued.

The Company further announces it contracted Hallgarten + Company Ltd. of 51 Weyhill Rd, Andover, Hants, SP10 3AN, United Kingdom

to write an editorial research report at the cost of \$7,500 USD on June 27, 2025. Options or shares of the Company were not issued. A link to this report can be found at [https://hallgartenco.com/wp-content/uploads/2025/07/Rockland\\_Initiation\\_July2025.pdf](https://hallgartenco.com/wp-content/uploads/2025/07/Rockland_Initiation_July2025.pdf).

## Qualified Person

The technical contents of this news release have been reviewed by David Taff, CAPG, CPG., a member of the Technical Advisory group to Rockland and a Qualified Person under NI 43-101.

## References

1. (1)MiRESSO Co. Ltd. <https://miresso.co.jp/en/company>
2. (2)[Google, Kairos Power, TVA announce collaboration – World Nuclear News](#)
3. (3)1973. K.C. Thomson. Mineral Deposits of the Deep Creek Mountains, Tooele and Juab Counties, Utah. Utah Geological and Mineralogical Survey Bulletin 99, 91p.[B-99.pdf](#)
1. (4)Reid, R.R. and Choate, R. 1960. Prospecting for Beryllium in Idaho. Idaho Bureau of Mines and Geology Information Circular No. 7, 24p.
2. (5)[Laser-Induced Breakdown Spectroscopy–An Emerging Analytical Tool for Mineral Exploration](#)
3. (6)Sci Aps. [HH LIBS and XRF analyzers for Geochemistry](#)
4. (7)1988. Topaz Mountain Beryllium Venture Feasibility Report. Inspiration Gold Company. (Rockland has not confirmed the historic data and conclusions contained herein.)
5. (8)Sabey, P., 2015. Mill beryllium analyzer results on Clay Banks Ore Pile Samples. 2p. (Rockland has not confirmed the historic data and conclusions contained



herein.)

6. (9)Materion Corporation Annual Report. [MATERION-CORP\\_2024-Final.pdf](#)
7. (10)Mithril Mining Corp. [Mithril Mining](#)
8. (11)[Fraser Institute News Release: Utah tops global mining survey rankings, Niger ranks last](#)

## **About Beryllium**

Beryllium is a high-value and essential light metal with wide applications in the aerospace, computer, telecommunications, electronics, medical, satellite, clean energy and defense sectors. The primary ore minerals of beryllium are bertrandite and beryl. Anticipated future needs for beryllium, combined with the limitation of having only a single mine for US domestic use, places beryllium as both a critical and a strategic mineral according to US government sources.

## **About Rockland Resources Ltd. – Exploring For Tomorrow's Technology**

Rockland Resources Ltd. (CSE: RKL) (OTCQB: BERLF) (FSE: GB2) is specializing in beryllium discovery and development at its strategically located Meteor, Beryllium Butte and Claybank projects in the Spor Mountain region of Utah, USA. Spor Mountain is home to Materion's (NYSE: MTRN) Spor Mountain Mine, the largest beryllium producer in the world and continuously mined since 1969. In 2024 the Fraser Institute ranked Utah as the prime jurisdiction in the world for mining investment. Rockland has a unique position with its Utah jurisdiction, its properties in Spor Mountain, and an experienced team with significant depth in the exploration, recovery and marketing of beryllium.

The Company also holds a 100%-interest in the Cole Gold Mine, located in the western portion of the prolific Red Lake gold



district of Ontario.

**On Behalf of the Board of Directors**

Michael England, CEO & Director

**For further information, please contact:**

Mike England

Email: [mike@engcom.ca](mailto:mike@engcom.ca)

***Neither the Canadian Securities Exchange nor its Regulation Services Provider accepts responsibility for the adequacy or accuracy of this release.***

**FORWARD -**

***LOOKING STATEMENTS: This news release contains forward-looking statements, which relate to future events or future performance and reflect management's current expectations and assumptions. Such forward-looking statements reflect management's current beliefs and are based on assumptions made by and information currently available to the Company. Investors are cautioned that these forward-looking statements are neither promises nor guarantees and are subject to risks and uncertainties that may cause future results to differ materially from those expected. These forward-looking statements are made as of the date hereof and, except as required under applicable securities legislation, the Company does not assume any obligation to update or revise them to reflect new events or circumstances. All of the forward-looking statements made in this press release are qualified by these cautionary statements and by those made in our filings with SEDAR in Canada (available at [WWW.SEDAR.COM](http://WWW.SEDAR.COM)).***